

Cane News

*CANEGROWERS Proserpine's
monthly member newsletter*



WELCOME TO THE 2021 ISSUE # 10 OF 'CANE NEWS'

ARE YOU FOLLOWING US ON FACEBOOK?



Be sure to 'like' our page to keep up to date with Proserpine cane industry news, events & information

DATE CLAIMER

**** 2020/21 CANEGROWERS PROSERPINE & SSP AGMs ****

This year's AGMs will be held at the Proserpine RSL Club on
Friday 19th November, 2021.

Meeting notices & Annual Reports will be emailed to all members in the
coming weeks.

Member RSVPs would be appreciated by Friday 12th November.



JEPPESSEN FARMING CO.

Jake Mitchell

- For all your agricultural contracting needs -

Tony Jeppesen

0408 160 660

0414 322 729

Laser levelling , truck & dog, surveys, earthmoving & more



Spruiking sustainable sugar

CANEGROWERS has met with the European Association of Sugar Traders (ASSUC) to discuss issues associated with the Australia-EU Free Trade Agreement. ASSUC is highly supportive of the full inclusion of sugar in the FTA and has a particular interest in increasing its members' ability to secure high quality, sustainably produced sugar for European customers. Discussions will continue with the next meeting to include an explanation of Smartcane BMP and how it is aligned with international sugar accreditation systems such as Bonsucro, Vive, and Proterra.

Future strategy project takes big step forward

CANEGROWERS has welcomed the announcement that the Cooperative Research Centre for Northern Australia (CRCNA) will support the sugar industry's work to develop a strategy and roadmap to secure its future. Industry leaders, growers, millers and researchers, began a year ago to work together on a strategy.

The **Sugarcane Industry Roadmap project** will be the first whole-of-industry shared vision and roadmap to 2040. It will identify the future forces likely to impact the industry, establish agreed priorities and provide insight into the skills, resources, innovation and infrastructure needed for future success. CANEGROWERS will ensure that grower perspectives and opinions are heard at every step in the process.

Meetings with Ministers on cane issues

The CANEGROWERS Chairman, CEO and Policy Managers have met with two Queensland Government ministers over the past week.

Glenn Butcher, Minister for Regional Development and Manufacturing and Minister for Water, was briefed on irrigation issues and in particular the need to identify impediments to optimal irrigation water use, reasons for the chronic underutilisation of water, and initiatives to overcome these issues and promote higher water use.

Meaghan Scanlon, Minister for the Environment and the Great Barrier Reef, was briefed on cane growers' issues relating to N & P provisions in the reef regulations. CANEGROWERS is calling for recognition from the government that the Smartcane BMP accreditation process fulfils the requirement of an 'Appropriate Person', so accredited growers will not need to engage such a person to sign-off on their N & P management.

Savings for Members

The supplier of gas and welding equipment, BOC, is among the companies offering discounts to CANEGROWERS members. BOC has a national promotion through October and November with a catalogue which is available here:

www.boc.com.au/shop

For some items, CANEGROWERS members can access bigger discounts than those offered in this promotion so it's worth checking your BOC account or with your local BOC store to confirm your CANEGROWERS price.

CANEGROWERS 2020/21 Annual Report

The CANEGROWERS Annual Report for 2020-21 is now available online and copies will soon be in all district offices. Published ahead of the Annual General Meeting scheduled for Tuesday 9 November 2021, the report is a summary of how CANEGROWERS has served members through activities, projects and programs throughout the year. In this important reporting season, you can find:

- The **Annual Report** on the **publications page** of the CANEGROWERS website,
- The **Financial Report** is on the **Member Resources page** (you will need to log in with your member number and district name), and
- A proxy form for the AGM is with your October *Australian Canegrower* magazine

Info, new video & new PDFs to download & read

With the 31 October marketing choice deadline fast approaching, there are some fantastic forward pricing opportunities available to growers. For more information, watch this month's video and read the PDF updates from the CANEGROWERS Marketing Information Service

You can access this information by logging into the member services section at www.canegrowers.com.au, using your CANEGROWERS membership number.

MOVING AG VEHICLES & EQUIPMENT

CANEGROWERS has developed a range of resources for members needing to move their larger farm vehicles and equipment on public roads. The guides are a summary of the National Class 1 Agricultural Vehicle and Combination Mass and Dimension Exemption Notice Operator's Guide which was updated in November 2020.

The guides can help members understand dimension and mass limits and the conditions for travel on critical, major and minor roads and within each cane-growing region to assist you in meeting your legal and safety obligations. These guides are provided at a point in time and cannot include the more complex detail in the

regulations. If more information is needed, following links provided within the guides is strongly recommended.

Traffic management plan checklists, decision making tools, critical/major road maps, links to further information and so much more can be accessed by logging into the CANEGROWERS 'member resources' section at www.canegrowers.com.au, using your member number and password. If you can't locate your member number, please don't hesitate to contact the Proserpine office for assistance.

NATIONAL SAFE WORK WEEK

To coincide with October being National Safe Work Month, CANEGROWERS will be launching the **CANEGROWERS Workplace Health and Safety (WHS) Guide for sugarcane farms**.

CANEGROWERS engaged a team from James Cook University to develop this Guide to be a practical user-friendly document with the aim of supporting growers and raising awareness and understanding of the legislative requirements of the *Qld Workplace Health and Safety Act 2011*.

The Guide is available on the CANEGROWERS website. As it is a member's resource, please note that members must use their log-in details to access the Guide. Members can log in using their membership number and chosen password. If you can't locate your membership number, please don't hesitate to contact the Proserpine office.

FOR SALE

Harvesting contract at end of 2020/21 crushing season. Includes:

- JD570 Fulltrack Harvester
- 3 x MAN TGA390 trucks w/ Griffcam 10T tippers
- 4 x CASE Powerhauls
- Miscellaneous harvesting equipment

To be sold with 50,000 tonnes plus cut. Harvesting 90,000 tonnes this season.

Contact Ian Considine for more information – 0410 664 890

NPKS plus
300-400kg/ha of
organic carbon



Bio Dunder®
Leave the fertilising to us



Get in touch:

JACOB SNYMAN
0419 174 616

wilmar



The SSP team are pleased to advise that a RSD shed meeting has been scheduled for November, with Dr Rob Magarey (Leader, Disease Management – SRA) and leading RSD scientists in attendance. The guest speakers will be explaining the RSD testing process, discussing yield loss and answering attendee's questions.

Members are encouraged to contact Frank Millar with your questions prior to the shed meeting, especially questions about RSD spread, management and control, so Dr Magarey can ensure enough time is allocated to adequately cover these areas.

SUGAR SERVICES PROSERPINE

RSD INFORMATION MEETINGS

Guest Speaker Dr Rob Magarey from SRA will provide information on the latest research findings and answer all your questions regarding spread, prevention and potential yield impacts.

Date: Wednesday 17th November 2021

Venue: Raiteri's shed, Up River Road

Time: 9.30 am

Venue: Cantamessa's shed, Strathdickie

Time: 2.30 pm

In light of the high numbers of infected blocks being identified, SSP encourages growers attend one of these information sessions.

Refreshments provided.



SUGAR CANE BURNING NOTIFICATION & FIRE WARDENS

The Cane Burning Notification gives cane growers the authority to burn sugar cane in accordance with the Fire and Emergency Services Act 1990, provided minimum conditions are met.

What is the Cane Burning Notification used for?

The Cane Burning Notification (notification) is one of two mechanisms available to cane growers to ensure that burning of sugar cane is authorised in accordance with the *Fire and Emergency Services Act 1990*. The notification issued in the Queensland Government Gazette on 31 May 2019, sets out minimum conditions for the burning of sugar cane and replaces previous versions released in 2004 and 2010.

When should cane growers apply for a Permit to Light Fire?

Cane growers must apply for a Permit to Light Fire if they cannot meet the conditions of the notification or if they are unsure. Any cane grower can apply for a Permit to Light Fire, regardless of whether their land is eligible for burning under the notification.

Road classes and land parcel mapping

Two mapping tools are available for use by growers to help determine if a parcel of cane land is eligible for burning under the Cane Burning Notification; Fire Warden Finder and Queensland Globe.

Contact your Fire Warden

Cane growers should check with their Fire Warden if they are unsure if their cane is eligible for burning under the Cane Burning Notification, or to confirm the minimum conditions that are needed for compliance. Accessing the website & entering your address will display your Fire Warden district and a contact number for the relevant Fire Warden.

All of the information mentioned above can be accessed by visiting: www.qfes.qld.gov.au/safety-education/using-fire-outdoors.

CANEGROWERS INSURANCE - WHERE WE LOOK AFTER YOU

Be aware that insurance policies do not cover maintenance related issues....

Your Responsibilities:

- Keep your home and contents well-maintained and in good condition
- Maintain locks and alarms in good working condition
- Take all reasonable care to prevent theft, loss or damage to your property



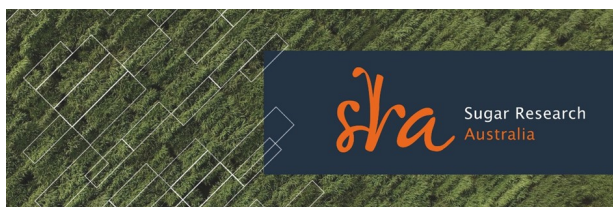
Not meeting your Responsibilities? Your Insurance Company may:

- Refuse to pay your claim
- Cancel your insurance policy

Maintaining your home and contents:

Any loss, damage or legal liability resulting from your failure to maintain your home in good repair and condition to ensure it is watertight, structurally sound, secure and well-maintained.

Our Insurance Admin, Trish, is in the Proserpine office between 9am to 3pm, Monday to Thursday for any quote enquiries or questions regarding any policies we hold for you. Alternatively, you can phone (07) 4945 1844 or email trish_chesham@canegrowers.com.au.

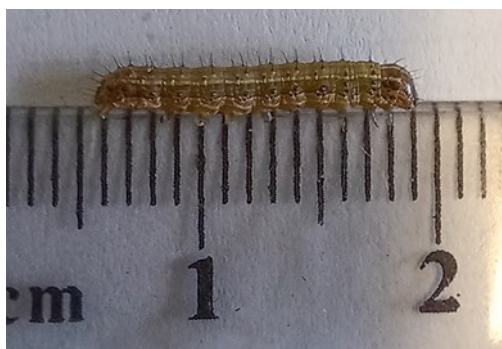


Fall armyworm (FAW) has been detected on two separate blocks of sugarcane in the Burdekin region. Growers are advised to remain aware and observant, but at this stage there is no cause for action.

The first block where the FAW was detected is young late plant cane and had a high level of grass weeds present in the block. These grass weeds have been controlled, and it is suspected that the population of FAW has subsequently moved from them to the sugarcane crop.

On this block there is less than one FAW per stool, and damage is minimal, so there is no requirement to spray or control the FAW worm at this stage. It is worth noting that there were crops of corn and sorghum in the near vicinity of this affected block and those crops are more susceptible to FAW damage than cane.

Growers are encouraged to remain observant and contact your local advisor if you have any concerns.



The situation is being monitored locally and SRA entomologists will be conducting further analysis on samples. Further updates and advice will be provided.

Previous detections of FAW in sugarcane on the Atherton Tablelands resulted in minimal damage to the crop at the time, and no control operations were required.

More information about FAW is available on the SRA website.

TIME TO CHOOSE



**YOU STILL HAVE TIME
TO MAKE A CHANGE
FOR THE 2022 SEASON.**

- >> **You can choose** whether you nominate your GEI Marketer for one year, two years or three.
- >> **You can choose** to split your nomination between marketers.
- >> **You can change** your nomination at any time before 31 October.

Talk to us about choosing Wilmar for 2022.

Book an on-farm meeting with your local consultant today.



SHIRLEY NORRIS
OFFICE Proserpine Mill
PHONE 0437 803 019



ELECTRICAL SAFETY WEEK **SPARKS ROTAMARKET REBATE**

Powerlines on agricultural land pose significant risk as they are difficult to see and there is no immediate and persistent reminder of their location, even in situations where farmers or vehicle operators know where they are. Unfortunately, in the past six years, 52 serious electrical incidents involving overhead powerlines have occurred in Queensland, and six people have died. Queensland farmers bear the important responsibility of ensuring they, their workers and other people on-farm are clear about their health and safety responsibilities and it's a duty they take very seriously. During Electricity Safety Week, it is important to raise awareness of the dangers above and consider mitigation methods.

Any farming business with overhead powerlines on their property that plants, harvests, sprays, irrigates or uses aerial applications should have a powerline safety plan and install overhead powerline markers to increase visibility and help prevent contact. At \$100 each, rotamarkers are an affordable solution to help alert farmers, workers, contractors, visitors and family members and maintain a constant reminder of where overhead powerlines are located. To encourage more farmers to utilise rotamarkers on their properties, the Queensland Farmers' Federation has partnered with Ergon Energy Network and Energex to offer farmers belonging to any of QFF's 20 industry members a 50 per cent co-contribution to install up to 10 rotamarkers on their properties. Together with their Look Up And Live mapping app, which the eligibility criteria of the program requires to be downloaded, farmers will have oversight of what powerlines are on or near their property and implement control measures making it safer for everyone.

Farmers make up just a small fraction of Queensland's total workforce but sadly make up a large number of workplace deaths and serious injuries, with the sector one of the

most dangerous to work in due to the combination of hazards including heavy plant and machinery, chemicals, noise, dust, sun and heat exposure, working with animals, alone or in remote locations. Therefore, it is important that farmers understand and prioritise their health and safety responsibilities and build a safety culture on their properties. For more information about the rebate and eligibility criteria, visit: www.qff.org.au/wp-content/uploads/2021/09/rotamarker-rebate-program.

ACCESSING WATER LIMITATIONS **NOTICES**

As all irrigators are aware, the Department of Regional Development, Manufacturing & Water place limitations on the taking of water when certain circumstances arise. To assist members in staying aware of any limitation notices that may be applicable to your location, all current notices can be viewed by clicking the link shown above. **Please note** that notices generally do not appear on the website until the day that they become effective. Notices of Limitations remain in force until they are withdrawn by way of another notice.

If you have trouble viewing the pdf versions available on the website, please email: WaterManagement@rdmw.qld.gov.au to receive the notice in an alternative format.

FOR SALE - Cane planting equipment

1 x Populin billet planter
wide elevator \$3,500

1 x Populin 2-ton tipper bin
\$2,500 ono

1 x Refalo 2.5-ton tipper bin
\$2,500 ono

Phone: 0419 774 579

MOVING AGRICULTURAL VEHICLES & EQUIPMENT

CANEGROWERS has developed a range of resources for members needing to move their larger farm vehicles and equipment on public roads. The guides are a summary of the National Class 1 Agricultural Vehicle and Combination Mass and Dimension Exemption Notice Operator's Guide which was updated in November 2020.

The guides can help members understand dimension and mass limits and the conditions for travel on critical, major and minor roads and within each cane-growing region to assist you in meeting your legal and safety obligations.

These guides are provided at a point in time and cannot include the more complex detail in the regulations. If more information is needed, following links provided within the guides is strongly recommended.

Traffic management plan checklists, decision making tools, critical/major road maps, links to further information and so much more can be accessed by logging into the CANEGROWERS 'member resources' section at www.canegrowers.com.au, using your member number and password. If you can't locate your member number, please don't hesitate to contact the Proserpine office for assistance.

HELPING PRIMARY PRODUCERS NAVIGATE QRIDA's LOANS

We're making it easier to start the conversation about how to apply for a QRIDA First Start or Sustainability Loan with the launch of a new 'how to apply' video. The simple, step by step video details the process an applicant may take when applying for a First Start or Sustainability Loan with QRIDA.

From a brief overview of the differences between a First Start and Sustainability Loan to helpful readymade resources available to help with their application, this new video can help guide you and your clients through the process of applying with QRIDA.

As proud supporters of Queensland primary producers, in the 2020-21 financial year, QRIDA approved 193 applications for First Start and Sustainability Loans, totalling \$104 million under the long running Primary Industry Productivity Enhancement Scheme (PIPES), and we're looking forward to helping even more producers this financial year. Our network of Regional Area Managers across Queensland are ready to answer any questions you may have as well as help primary producers with their application. visit qrda.qld.gov.au for more information.



CALL
000

1

STAY

in the harvester

CALL

000

WAIT

for help



2 If there's an immediate danger, like fire, and evacuation is **ABSOLUTELY** necessary, assess your escape route and check for fallen powerlines.



3 Exit the harvester by jumping - make sure to land with both feet together.



4 When jumping, **don't touch the harvester and the ground at the same time.**



5 Once landed with both feet together (careful not to stumble or fall), jump or shuffle with your feet together away from the harvester.



6 Move in this way until you are at least 10 metres away from the harvester. **DO NOT** go back.

What to do if your harvester brings down powerlines



1800 353 031



Queensland Government



Part of the Energy Queensland Group
13 16 70



13 19 62

EGE/1009

PROSERPINE QSL UPDATE



Annual Report now available

QSL has released its Annual Report for the 2020/2021 financial year, with highlights for the reporting period including:



View the Annual Report at <https://www.qsl.com.au/news-publications/annual-reports>

Marketing Declaration Deadline

Growers are reminded that October 31 is the final date to nominate QSL as your GEI Sugar Marketer for the 2022 Season. For more information, please get in touch with your local representative.

Thank you to those growers who have already selected QSL as their GEI Sugar Marketer for 2022 season, we look forward to working with you.

Early-Start Actively Managed Pool

The 2022-Season Early-Start Actively Managed Pool is now accepting nominations. This is a QSL-managed pool that prices 2022 Season sugar in the same manner as the Actively Managed Pool, but over a longer pricing window. Nominations will close 31 October 2021, with the pool's pricing window commencing from the first trading day after this date. Also available for nomination is the 2023 2-Season Actively Managed Pool and the 2024 3-Season Actively Managed Pool

Advance rate increase

QSL's Standard 2021-Season Advance Rate increased by 5% to 70% from 13 October.

Changes to farm arrangements

Planning to buy, sell or lease a farm, or changing your existing business arrangements? QSL Direct growers undertaking such changes need to submit our "Farm Sale/Lease Information Form" to capture any associated changes to payments or their QSL account.

This form is not a contract – it simply initiates the documentation process by gathering basic information about the transaction to enable QSL to prepare the relevant Deed of Acknowledgement and/or Deed of Novation, to implement associated pricing transfers. This can be done before, during or after the transaction occurs, but ideally, before the transaction occurs.

For further information or to commence the process, please contact Karen in your local QSL office or call the QSL Direct team on 1800 870 756.

QSL's 2021 Annual General Meeting

Queensland Sugar Limited will hold its 2021 Annual General Meeting (AGM) at 10am on Friday 22 October 2021 at the Christie Conference Centre, 320 Adelaide Street, Brisbane. QSL Chairman Guy Cowan and QSL Managing Director and CEO Greg Beashel will both address the meeting.



End of Year Christmas Party – Save the date

Proserpine QSL Grower Christmas Party
Monday 13 December, 4pm – 7pm @ Prince of Wales Hotel
We look forward to celebrating the 2021 Season with our growers and their families. Drinks and eats served.

QSL Grow Program seeks to promote the long-term sustainability of the Queensland sugar industry by supporting initiatives focused on protecting and increasing sustainable sugar production at a grassroots level. One event that QSL is proudly sponsoring is the **Proserpine Cut Out Party (Sat 4 December)**.



To celebrate the upcoming end of the 2021 crushing season local organisers are hosting the Proserpine Cut Out Party. Proceeds raised from the event will be donated to the Black Dog Institute, a not-for-profit medical research institute who research early detection, prevention and treatment of common mental health disorders, their aim is to create a mentally healthier world.

QSL are proud to be sponsors of this event supporting both the local cane farming industry as well as such a fantastic cause. Locally based Grower Relationship Officer Karen Vloedmans looks forward to catching up with the local cane farming community at the event.

For more information please contact QSL Grower Relationship Officer Karen Vloedmans:

Proserpine



Grower Relationship Officer
Karen Vloedmans
0429 804 876
karen.vloedmans@qsl.com.au

Disclaimer: The information in this document does not constitute financial advice. Growers should seek their own financial advice and read the QSL Pricing Pool Terms in full (available at www.qsl.com.au) before making any pricing and pool selection decisions. QSL does not accept any responsibility to any person for the decisions and actions taken by that person with respect to any of the information contained in this document.

Closing date for classified advertisements is the close of business of the first week of each month. Classifieds are free to CANEGROWERS members.

CANEGROWERS Proserpine does not necessarily endorse products or services advertised in, or associated with the newsletter.

Articles appearing in 'Cane News' do not necessarily represent the policies or views of CANEGROWERS .